

Configuring the LDS Printer for Ethernet Use

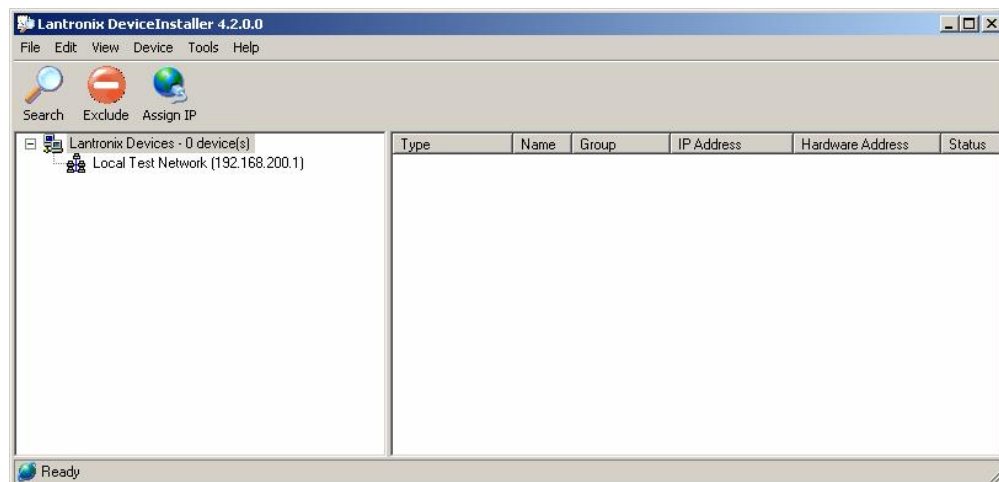
The LDS printer's Ethernet device is an XPORT device that may be configured using the *Device Installer* software or *Web Interface*. Printers are shipped from the factory with the Xport configured on port 9100, an IP address of 192.168.200.3, and Subnet Mask of 255.255.255.0. The process below will guide you using the Device Installer software but you first must install the software by selecting the SETUP.exe file listed under the X24 XPORT UTILITY on your product CD.

Configuring the XPORT:

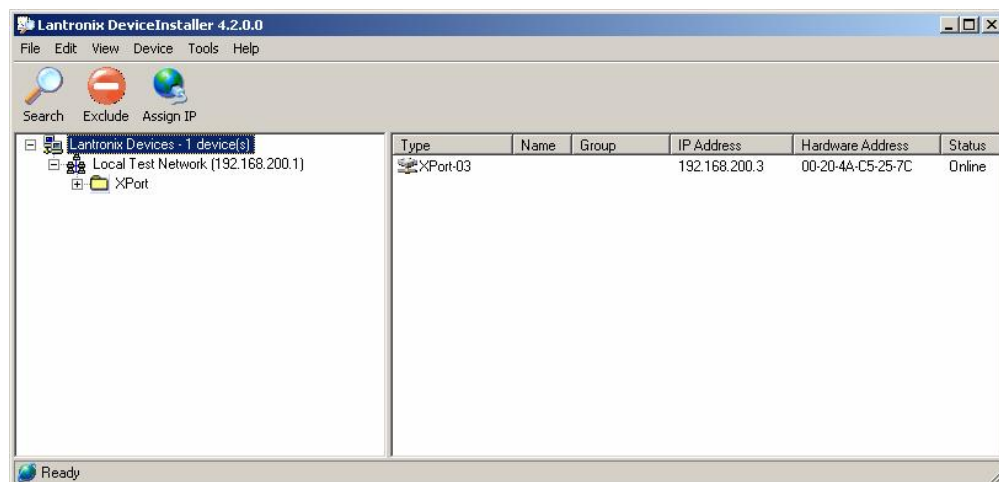
Connect to the printer's Ethernet port.

Either type 192.168.200.3 in your Web Browser or run the Device Installer software. Please note that you will need to add the 192.168.200.3 address to your network in order to communicate to the printer via the Web Interface.

After starting the Device Installer software, you will see a screen similar to the picture below.

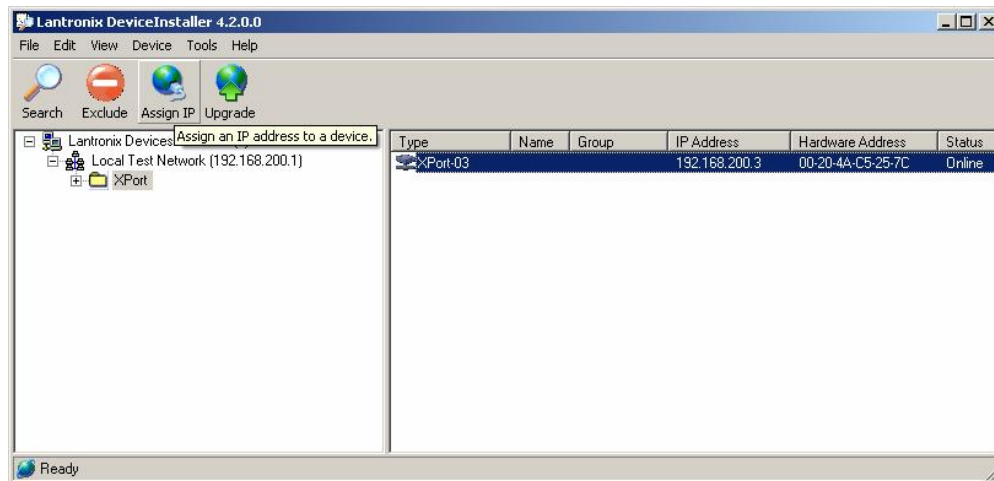


Select the Search button to search for the XPORT device.

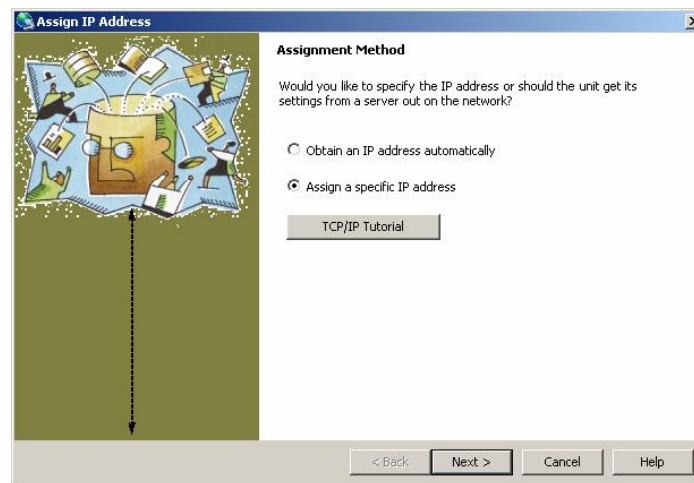


Configuring the LDS Printer for Ethernet Use

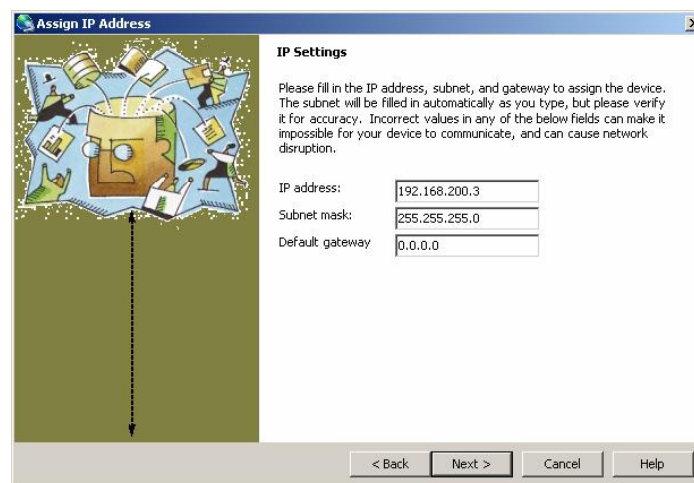
To change or configure the IP address, first click to highlight the XPOT-03 device and select the Assign IP button.



Select *Assign a specific IP address* and select *Next>*.

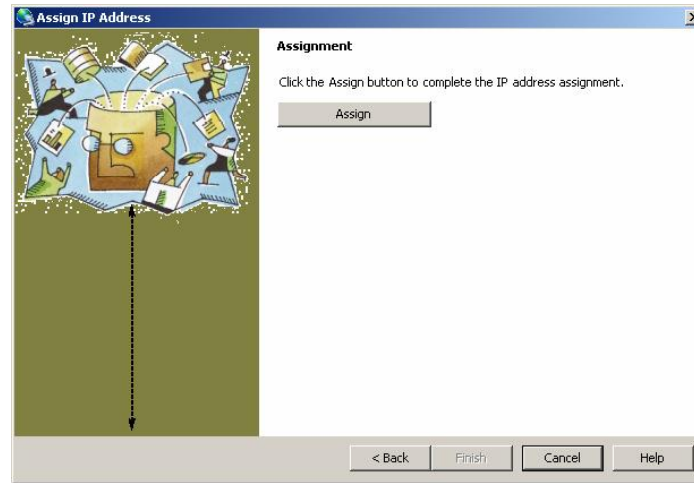


This screen allows you to assign the *IP Address* and the *Subnet Mask*. You will need to obtain these two items from your network administrator and select *Next>*.

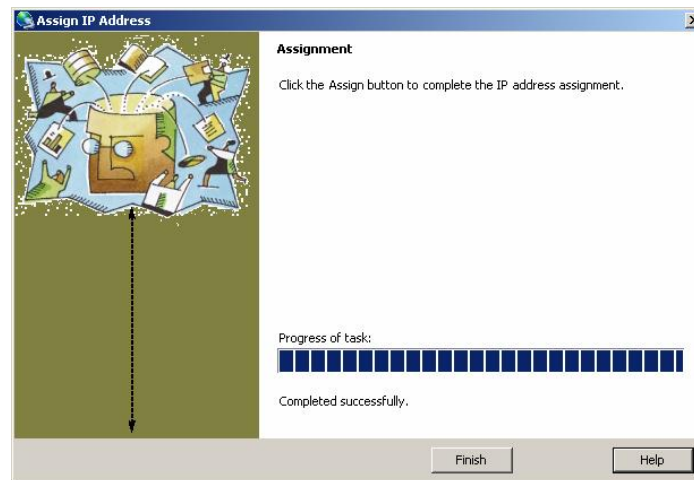


Configuring the LDS Printer for Ethernet Use

The next screen prompts you to confirm your selection by pressing the *Assign* button.



Once the task is complete, select the *Finish* button to return to the main *DeviceInstaller* screen.



The XPORT device is now configured. Before the printer will use the Ethernet port, the printer needs to have the Ethernet port selected as the active port.

Configuring the printer to use Ethernet:

Connect to the printer using either the Serial or USB port and a VT100 terminal emulation software package at 115200,n,8,1 serial parameters. Please note: Before using the USB port, the Prolific USB to Serial driver must be installed. The process below shows how to configure the Ethernet port using *Hyperterminal*.

Configuring the LDS Printer for Ethernet Use

Connect to the printer using a Serial or USB connection.

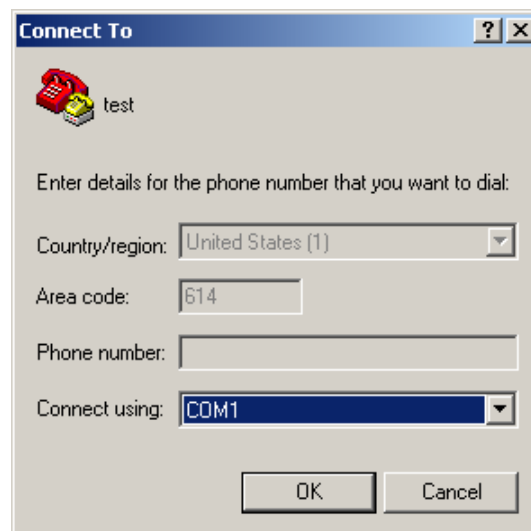
Install media into the printer.

Turn the printer ON with the print button pressed and held in. Release the button after the printer starts to feed media.

Open a Hyperterminal session and type *TEST* for the name, select *OK*.

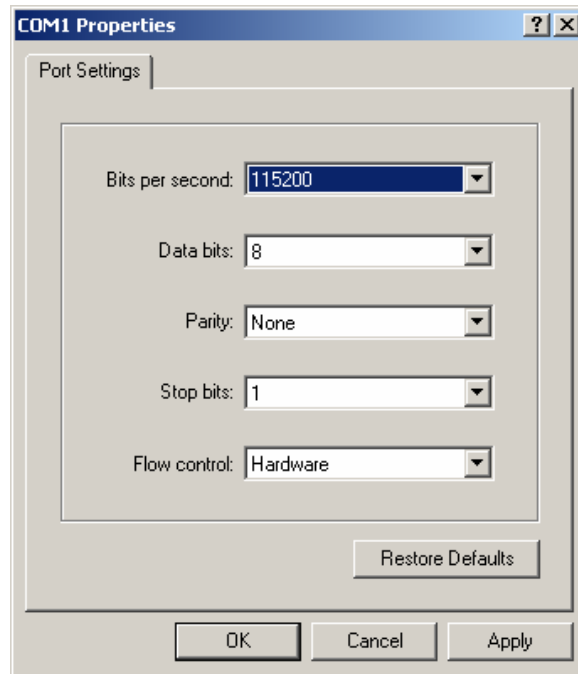


Select the COM port that you are using to communicate and then select *OK*.



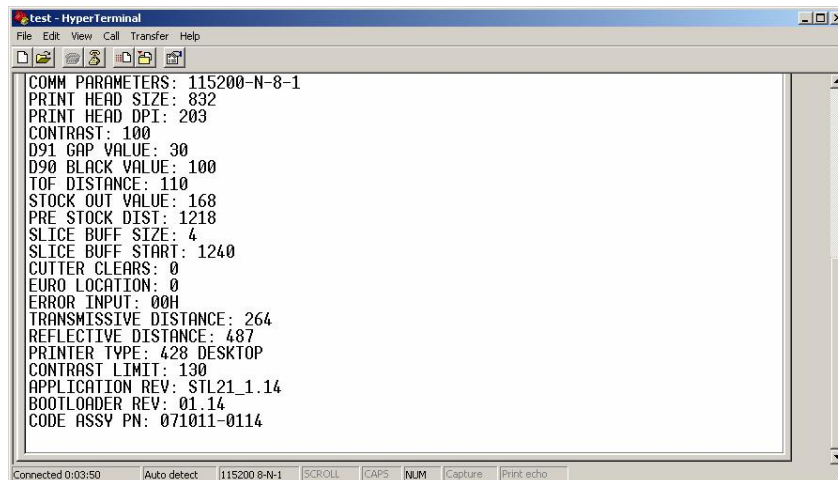
Configuring the LDS Printer for Ethernet Use

Set the COM parameters up for *115200,n,8,1* and *Hardware* flow control and select *OK*.



Type *^D29* in the window (you will not see the characters being echoed back, this is okay) and press the *Enter* key.

You should see information from the printer reported to the screen if communicating properly.



Type a *^A1^D108* followed by the *Enter* key to change the active port to Ethernet. Power cycle the printer and the unit should be configured for Ethernet operation.