

MICROCOM CORPORATION

315M THERMAL KIOSK PRINTER

SETUP GUIDE

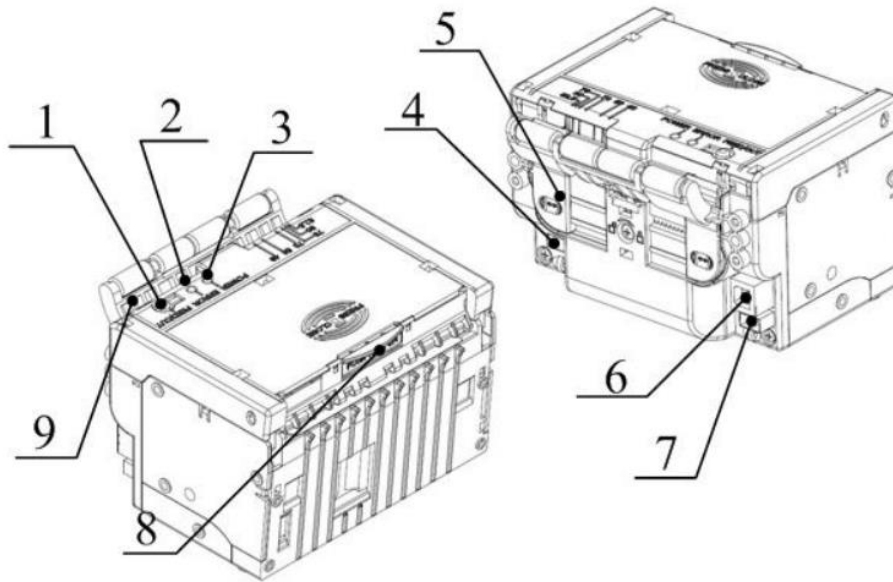
FOR WINDOWS APPLICATIONS

REVISION 1.0.1 • LAST UPDATED 09/01/2020 • PN 880078-0100

© COPYRIGHT 2020 BY MICROCOM CORPORATION • ALL RIGHTS RESERVED



HARDWARE OVERVIEW



1. Feed/Cut Button
2. Error LED
3. Power LED
4. Low Paper Sensor Input
5. Adjustable Paper Guides
6. USB Port
7. Power Input
8. Top Cover Release
9. Paper Feeding Arm

Feed/Cut Button Operation

- **Press and hold:** Feed paper through the printer manually.
- **Double-Tap:** Activate cutter.

Printing a Test Form

While paper is loaded, **hold** the **Feed/Cut** button while **powering on the printer**. This will print and cut a self-test form with detailed information on the printer's configuration and usage history.

WINDOWS DRIVER INSTALLATION

Download the Windows Driver

Download the Windows Driver from the 315M product page:

<https://www.microcomcorp.com/products/315m/>

The screenshot shows the Microcom Corporation website. At the top left is the Microcom logo. To the right are social media icons and the phone number (740) 548-6262. Below this is a search bar. A navigation menu includes Home, Products, Support, Downloads, Service, Supplies, Custom Solutions, Press, About, and Video Gallery. The main heading is "MICROCOM 315M THERMAL KIOSK PRINTER". On the left is a 3D image of the printer. To the right, under "KEY FEATURES:", are: PAPER WIDTH (1.9"-3.24" (48 mm-82.5 mm)), PRINT RESOLUTION (203 dpi), MAX PRINT SPEED (Up to 6" /second (150 mm)), COMMUNICATION PORTS (USB), and FIELD REPLACEABLE WEAR PARTS (Print Head, Drive Roller, Cutter). Below this, under "INDUSTRIES:", are icons for PARKING, HEALTHCARE, TRANSIT, and AIRLINE.

Windows Driver Installation

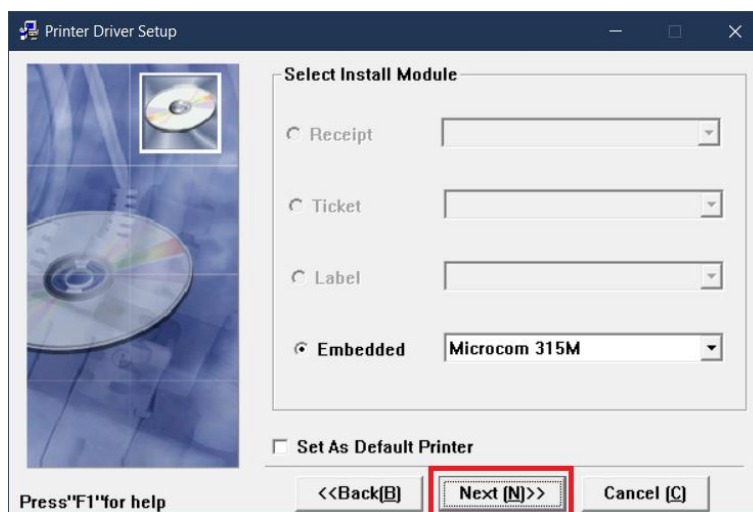
Plug the printer into the PC and power it on. Once the driver package has finished downloading, extract the archive and launch **Setup.exe** to begin installation.

Read and accept the legal agreement and then click **Next**.



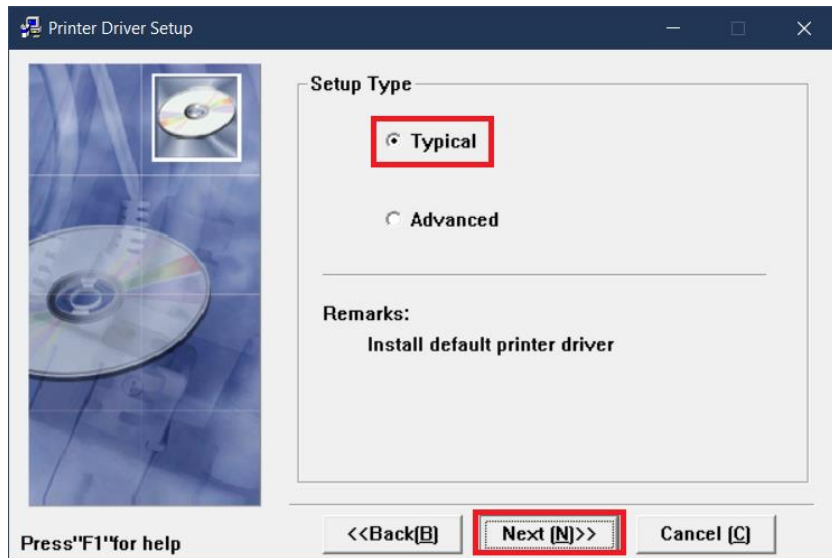
315M legal agreement

At the **Select Install Module** menu, verify that **Microcom 315M** is selected in the **Embedded** dropdown menu and click **Next**. You may also optionally choose to set the 315M as the default printer.



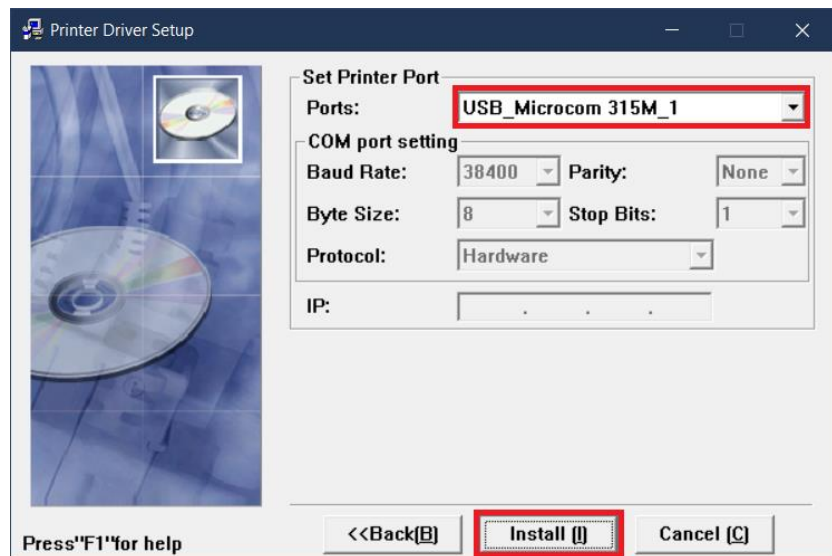
*Make sure **Microcom 315M** is selected*

At the **Setup Type** menu, select **Typical** and click **Next**.



*Set up the driver as a **Typical** installation*

Verify that printer is plugged in and powered on. At the **Set Printer Port** screen, select the **USB_Microcom 315M_1** listing and click **Install** to finalize installation.



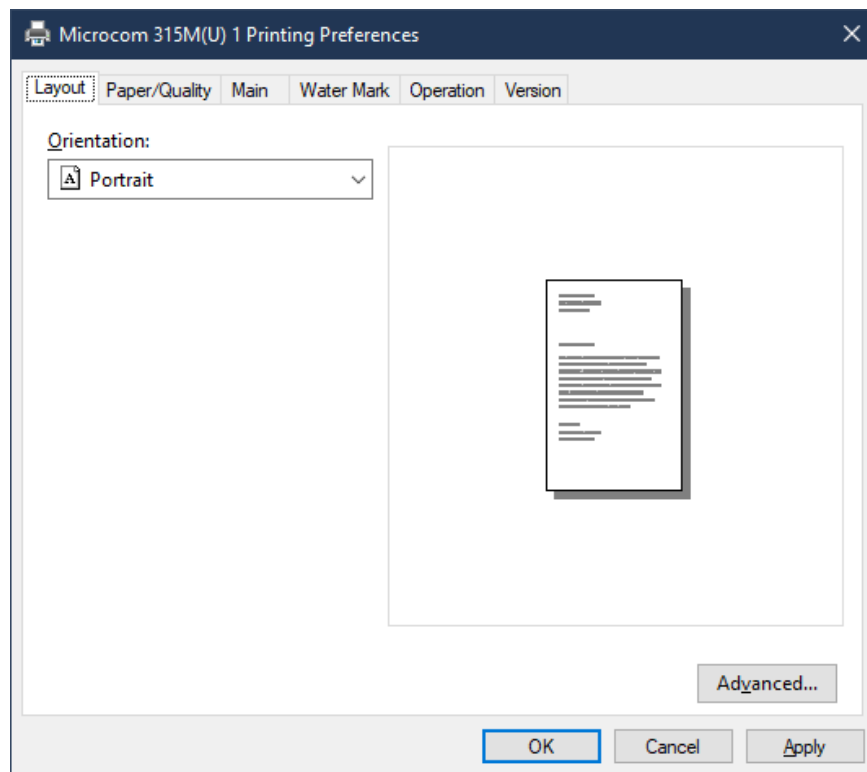
*Select the **USB_Microcom 315M_1** listing*

WINDOWS DRIVER SETTINGS OVERVIEW

Configure the driver by navigating to the **Devices and Printers** menu, right-clicking the **Microcom 315(U) 1** listing, and selecting **Printing Preferences**.

Layout Tab

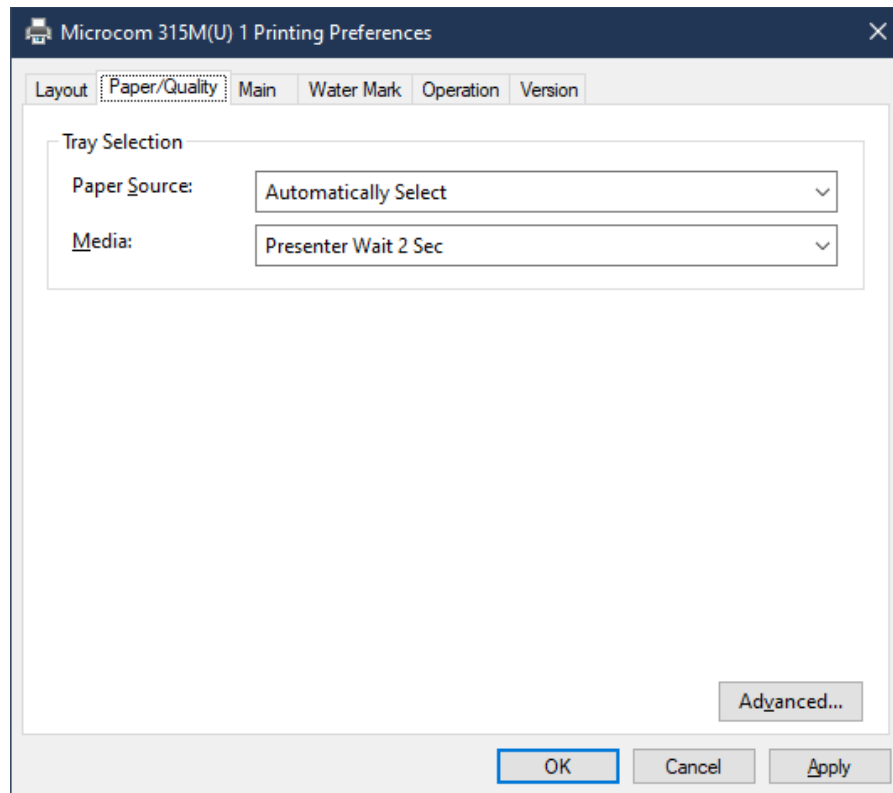
- **Orientation:** Set the printer to print in either **Portrait** or **Landscape** orientation.
- **Advanced:** Access advanced printer configuration options.



Layout tab of the Printing Preferences menu

Paper/Quality Tab

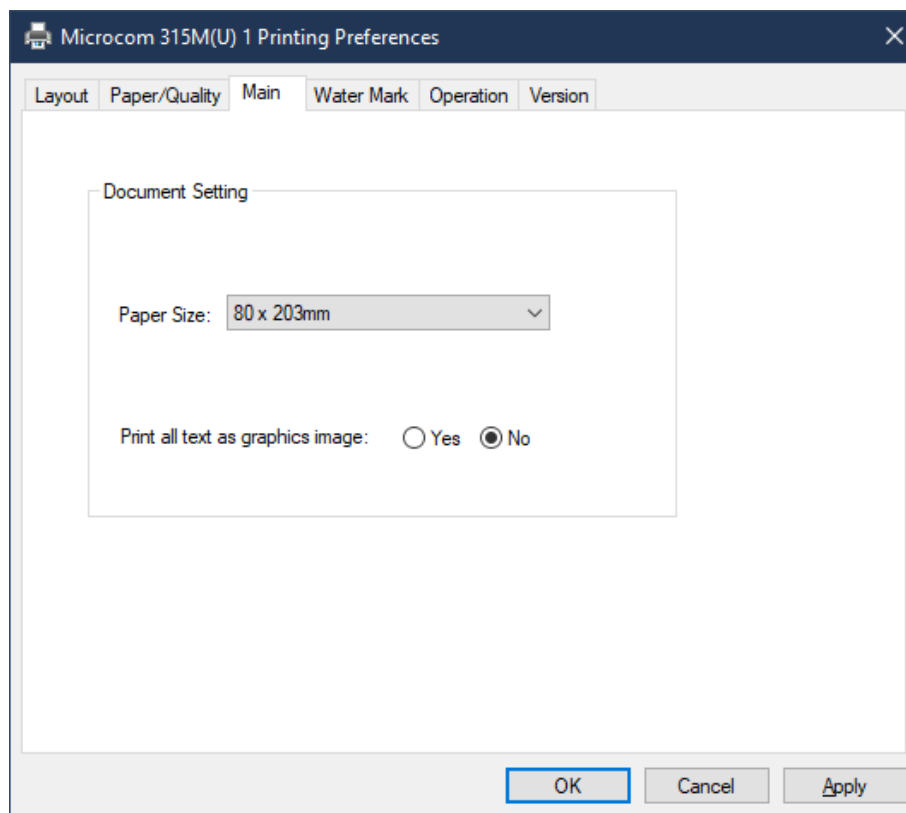
- **Paper Source:** Set the printer to use **Roll** or **Black Mark** paper.
- **Media:** Adjust the time the presenter will hold a printout after being printed.
- **Advanced:** Access advanced printer configuration options.



Paper/Quality tab of the Printing Preferences menu

Main Tab

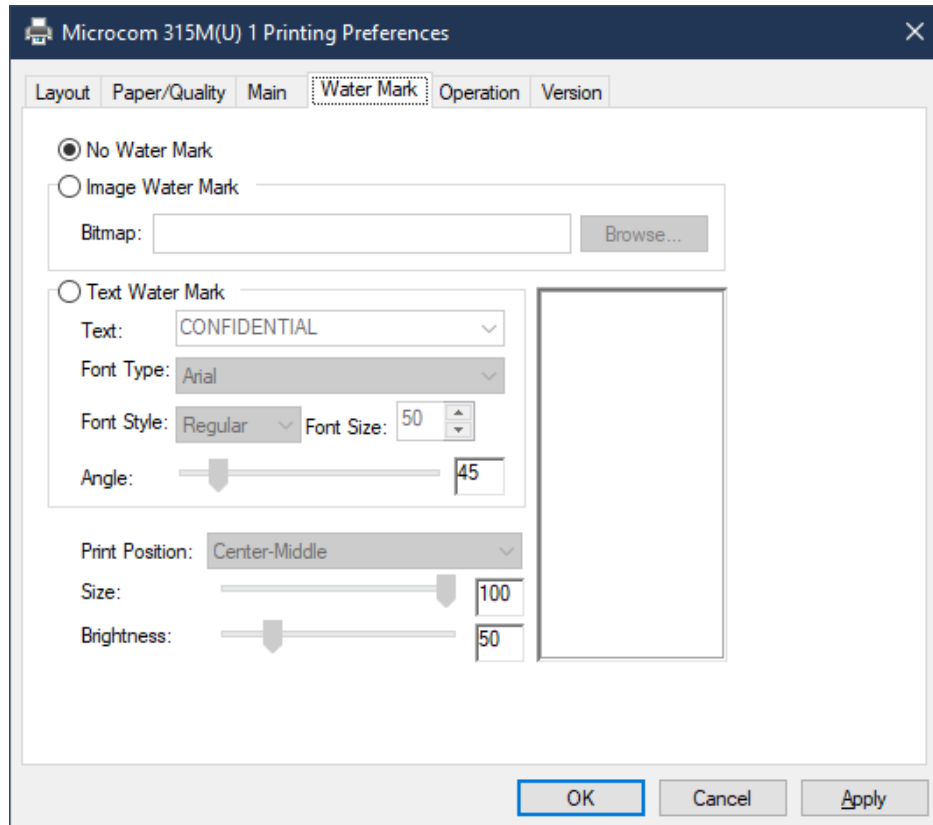
- **Paper Size:** Adjust the maximum paper size the printer will print before cutting.
 - o **Note:** To define a custom form size, highlight any printer in the **Devices and Printers** menu and select **Print Server Properties** in the top menu. In the **Printer Server Properties** menu, check **Create a new form** in the **Forms** tab to define a new paper size.
 - o **Note:** The maximum supported paper width for the 315M is **3.17"**.
- **Print all text as graphics image:** If a document contains text, it will first be rasterized into a graphic image before being printed. It is recommended to keep this set to **No**.



Main tab of the Printing Preferences menu

Water Mark Tab

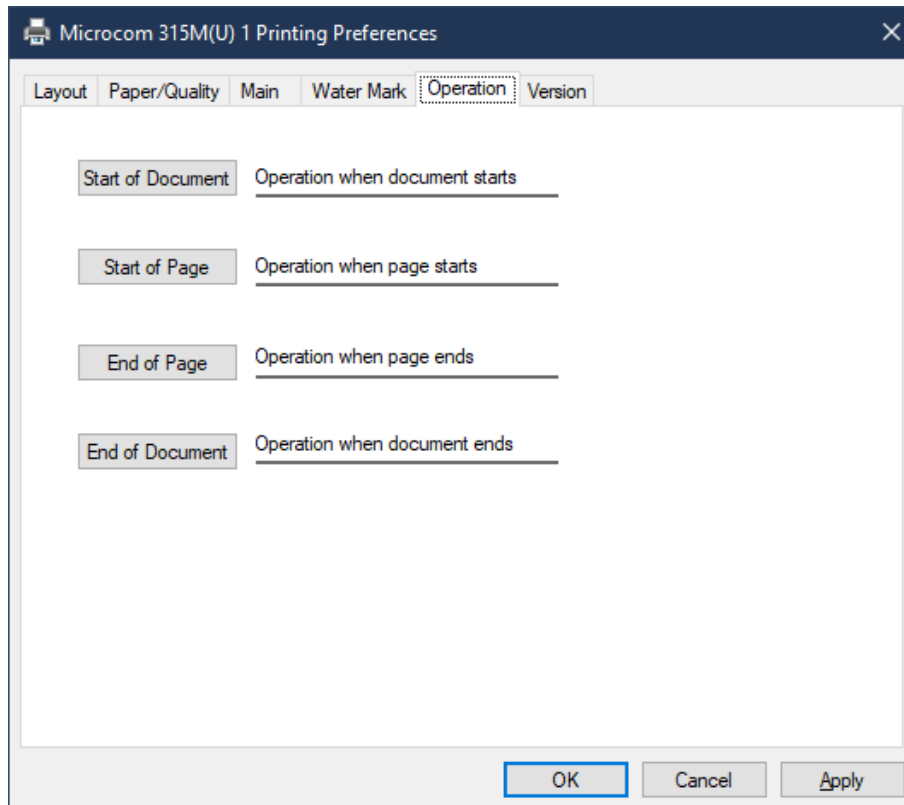
- **No Water Mark:** No water mark will be present on printouts.
- **Image Water Mark:** A water mark will be overlaid on printouts. This water mark is sourced from a bitmap image.
- **Text Water Mark:** A plain text water mark will be overlaid on printouts.



Water Mark tab of the Printing Preferences menu

Operation Tab

- **Start of Document:** Set a custom command to trigger at the beginning of every print job.
- **Start of Page:** Set a custom command to trigger at the beginning of every page in a print job.
- **End of Page:** Set a custom command to trigger at the end of every page in a print job.
- **End of Document:** Set a custom command to trigger at the end of every print job.



Operation tab of the Printing Preferences menu