



Microcom IP Discovery Application

User Guide

James Seelbach

11-21-2017

Document Version 1.0

TABLE OF CONTENTS

Overview	3
Introduction	3
Installing the application.....	3
Connecting the PC to the network.....	3
Quick Start.....	4
Printer IP Search.....	6
Printer MAC Search.....	7
Printer Serial Number Search	8
Ping Utility.....	9
Socket Configuration.....	10

OVERVIEW

Introduction

The Microcom IP Discovery Application may be used to discover and configure network-enabled Microcom thermal printers. It utilizes the UDP protocol and may be limited by routers in larger networks.

Installing the application

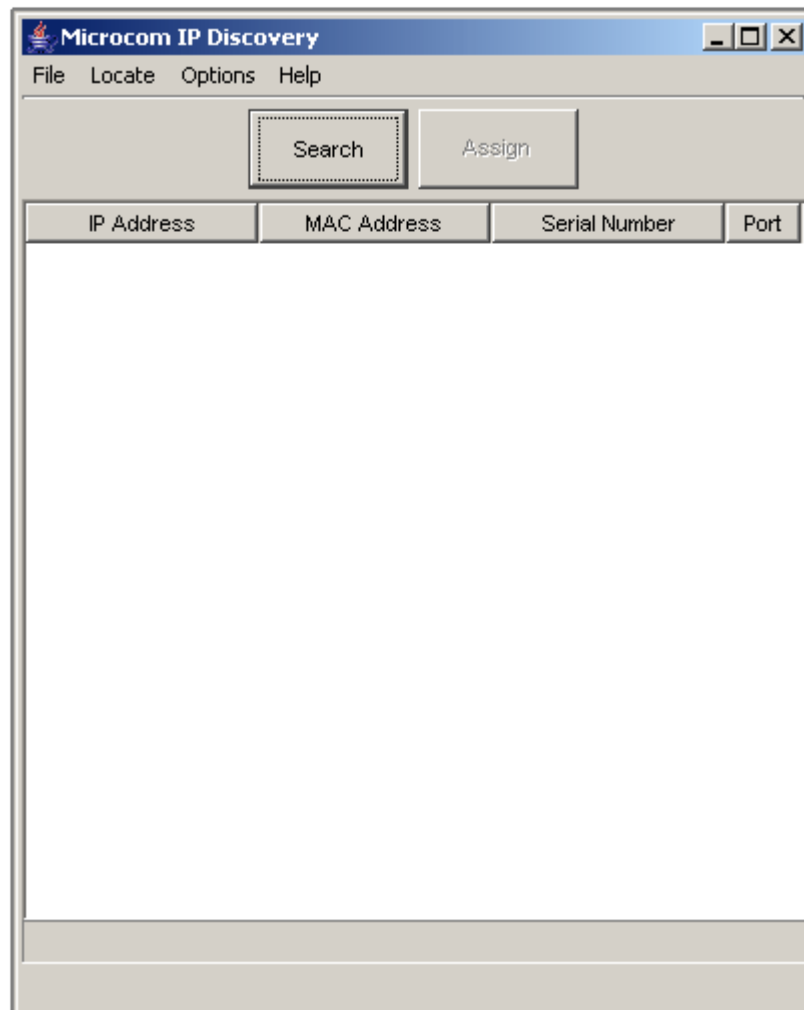
The Microcom IP Discovery Application is distributed as a standalone JAR (Java Archive) file. This file may be executed after the JRE (Java Runtime Environment) is installed on the machine. To install the latest JRE go to <http://www.oracle.com/technetwork/java/javase/downloads/index.html> and click *Download* under JRE. Once the JRE is successfully installed, you should be able to run the application simply by double-clicking *IPDiscoveryGUI.jar*.

Connecting the PC to the network

The PC that is executing the Microcom IP Discovery Application must be connected to the same network that the Microcom printers are connected to. If there are multiple network adapters on the PC (e.g. Wireless and Ethernet) it is possible that one or more of them need to be disabled in order to search the correct network. An example would be if there is both wireless and Ethernet available on a PC, the wireless may need to be disabled in order to search the Ethernet network.

Quick Start

The main application window used to locate Microcom printers is shown below:



Searching

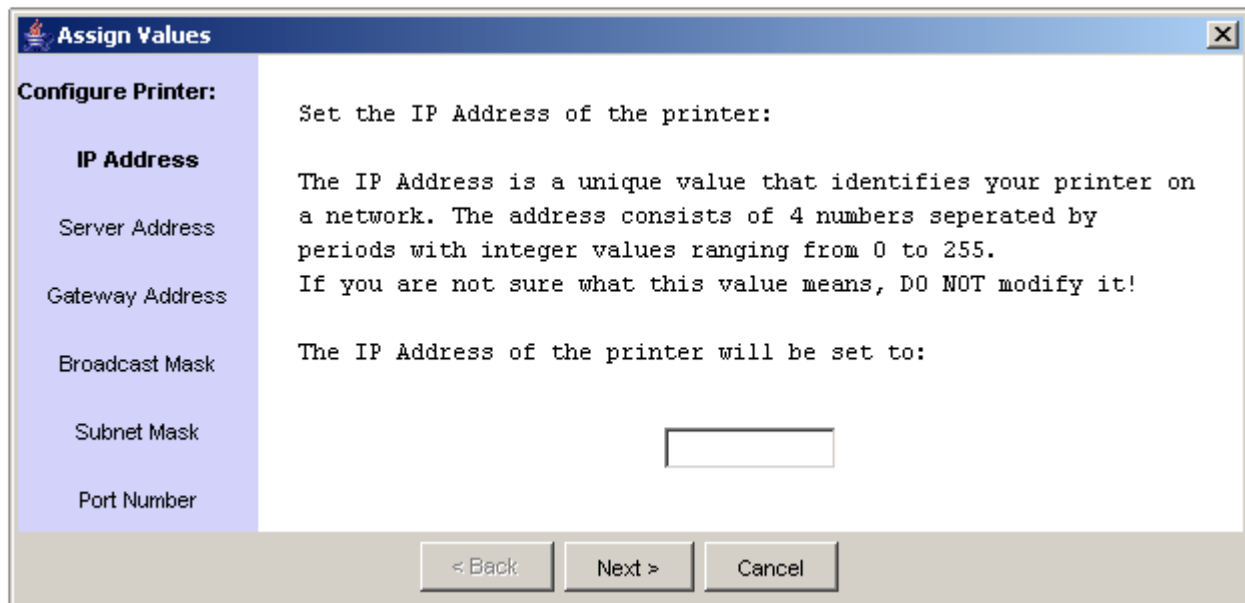
To locate Microcom printers located on the local area network, click the "Search" button. This button will start the discovery process. The main window will update as new printers are found. The progress of the search is indicated in a progress bar at the bottom of the interface and any located printers will be added to the main display table. The display table will contain the IP address, MAC address, serial number, and port values of all located printers.

Canceling Searches

While searching for printers, the "Search" button will become a "Cancel" button. Clicking the "Cancel" button causes the application to immediately cease searching and leave only the already located printers in the table.

Assigning Values

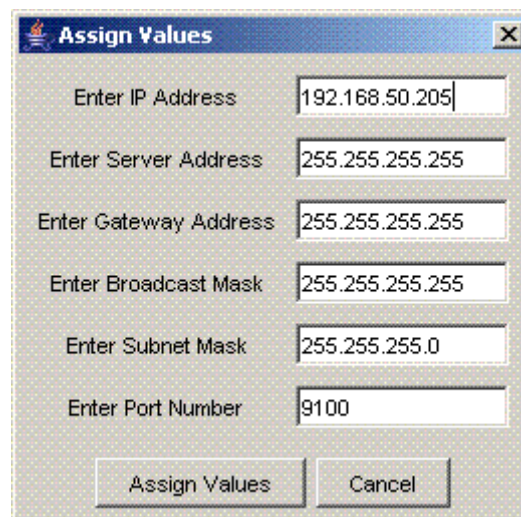
To assign values to located printers two methods are provided. By highlighting a printer in the main display table and clicking the "Assign" button, an "Assign Values" window is opened



The "Assign Values" dialog box has a title bar with a close button. On the left is a sidebar with the heading "Configure Printer:" and a list of options: "IP Address", "Server Address", "Gateway Address", "Broadcast Mask", "Subnet Mask", and "Port Number". The "IP Address" option is selected. The main area contains the text "Set the IP Address of the printer:" followed by an explanatory paragraph: "The IP Address is a unique value that identifies your printer on a network. The address consists of 4 numbers separated by periods with integer values ranging from 0 to 255. If you are not sure what this value means, DO NOT modify it!". Below this is the text "The IP Address of the printer will be set to:" followed by an empty text input field. At the bottom are three buttons: "< Back", "Next >", and "Cancel".

that takes the user through a wizard for assigning Ethernet configuration values to the printer, step-by-step.

By double-clicking a printer in the main display table, a power-user assign window is opened

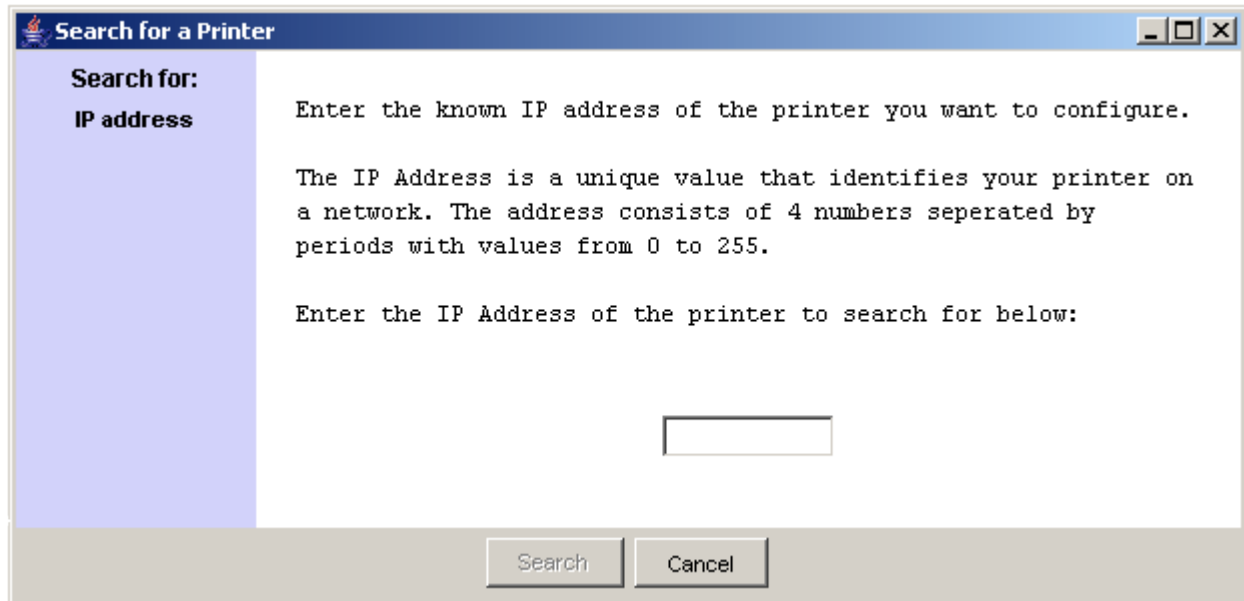


This "Assign Values" dialog box is for power-user assignment. It contains six input fields with labels: "Enter IP Address" (192.168.50.205), "Enter Server Address" (255.255.255.255), "Enter Gateway Address" (255.255.255.255), "Enter Broadcast Mask" (255.255.255.255), "Enter Subnet Mask" (255.255.255.0), and "Enter Port Number" (9100). At the bottom are two buttons: "Assign Values" and "Cancel".

that allows the user to assign all the available Ethernet configuration values at the same time. While printers are assigning their entries in the main display table will be replaced with a "Printer Assigning Values..." message, and the progress bar will bounce back and forth until all assigning printers have been updated in the table.

Printer IP Search

To locate printers based on an IP address, under the Main Application Window select "Locate" -> "IP Address" to bring up the following window:



Search for a Printer

Search for:
IP address

Enter the known IP address of the printer you want to configure.

The IP Address is a unique value that identifies your printer on a network. The address consists of 4 numbers separated by periods with values from 0 to 255.

Enter the IP Address of the printer to search for below:

Search Cancel

Searching

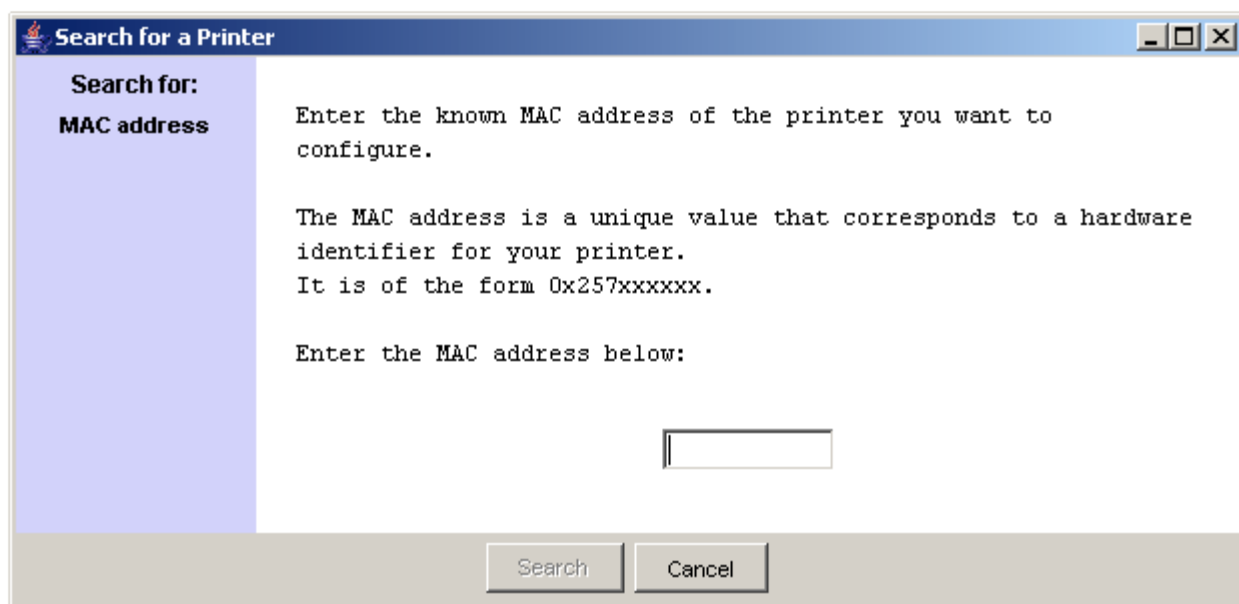
To search for a printer IP address, an IP address, in the standard xxx.xxx.xxx.xxx form, should be entered into the provided text entry point. With a value entered, clicking the "Search" button will signal the IP discovery application to search for the printer with the provided IP address. If no printers are located a warning prompt window will pop up; if printer(s) are located they will be added to the main table, and a value assign window will automatically pop-up to allow ease of configuration.

Canceling

Clicking the "Cancel" button causes the IP search window to close without searching.

Printer MAC Search

To locate printers based on a MAC address, under the Main Application Window select "Locate" -> "MAC Address" to bring up the following window:



The screenshot shows a window titled "Search for a Printer". On the left is a light blue sidebar with the text "Search for:" and "MAC address" below it. The main area of the window contains the following text: "Enter the known MAC address of the printer you want to configure.", "The MAC address is a unique value that corresponds to a hardware identifier for your printer.", "It is of the form 0x257xxxxxx.", and "Enter the MAC address below:". Below this text is a single-line text input field. At the bottom of the window are two buttons: "Search" and "Cancel".

Searching

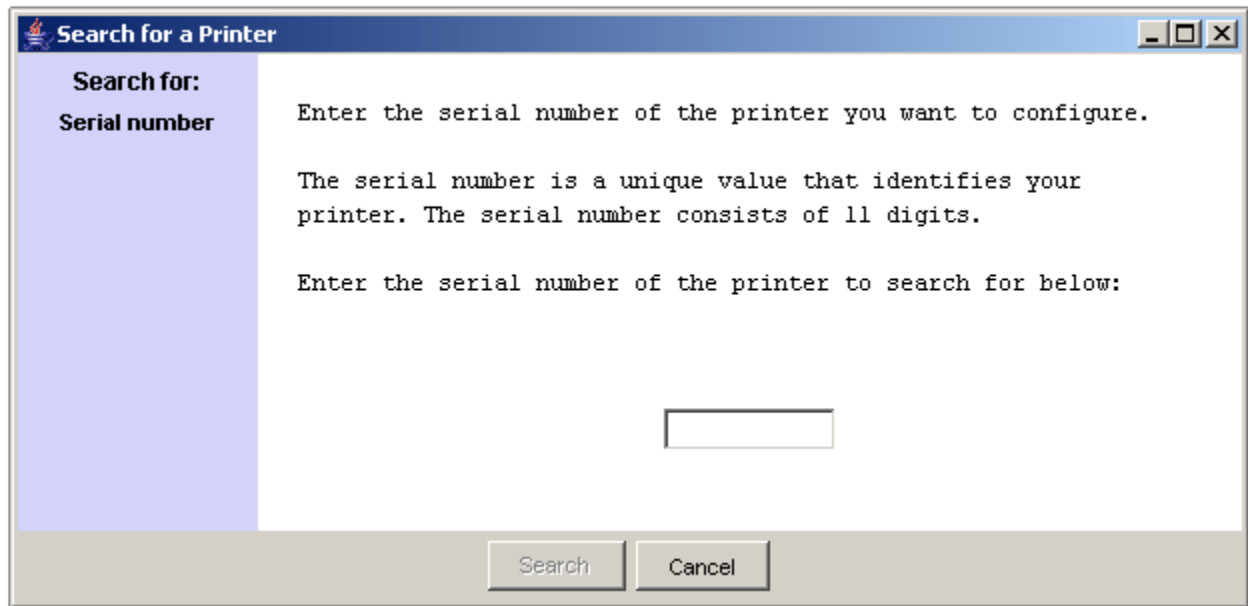
To search for a printer MAC address, a MAC address, in the standard 0x257xxxxxx form, should be entered into the provided text entry point. With a value entered, clicking the "Search" button will signal the IP discovery application to search for the printer with the provided MAC address. If no printers are located a warning prompt window will pop up; if printer(s) are located they will be added to the main table, and a value assign window will automatically pop-up to allow ease of configuration.

Canceling

Clicking the "Cancel" button causes the MAC search window to close without searching.

Printer Serial Number Search

To locate printers based on the serial number, under the Main Application Window select "Locate" -> "Serial Number" to bring up the following window:



The screenshot shows a Windows-style dialog box titled "Search for a Printer". On the left, there is a light blue vertical bar containing the text "Search for:" and "Serial number". The main area of the dialog box has a white background and contains the following text: "Enter the serial number of the printer you want to configure.", "The serial number is a unique value that identifies your printer. The serial number consists of 11 digits.", and "Enter the serial number of the printer to search for below:". Below this text is a single-line text input field. At the bottom of the dialog box, there are two buttons: "Search" and "Cancel".

Searching

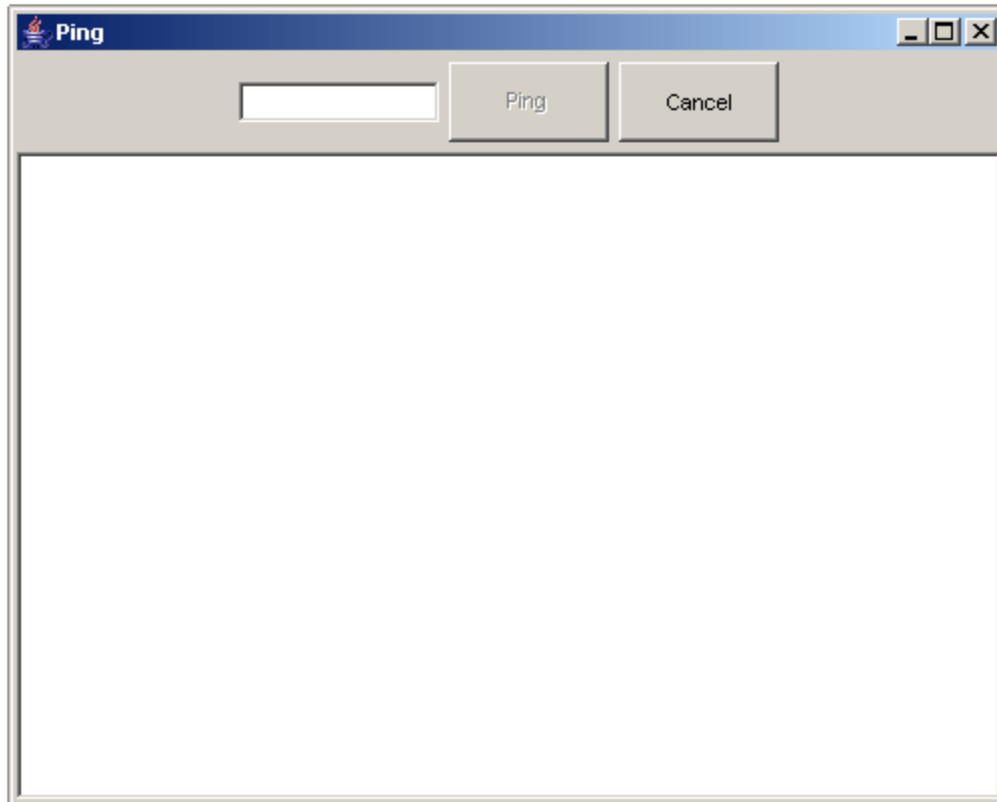
To search for a printer serial number, an 11 digit serial number should be entered into the provided text entry point. With a value entered, clicking the "Search" button will signal the IP discovery application to search for the printer with the provided serial number. If no printers are located a warning prompt window will pop up; if printer(s) are located they will be added to the main table, and a value assign window will automatically pop-up to allow ease of configuration.

Canceling

Clicking the "Cancel" button causes the serial number search window to close without searching.

Ping Utility

To access the Ping utility, under the Main Application Window select "Locate" -> "Ping" to bring up the following window:



Searching

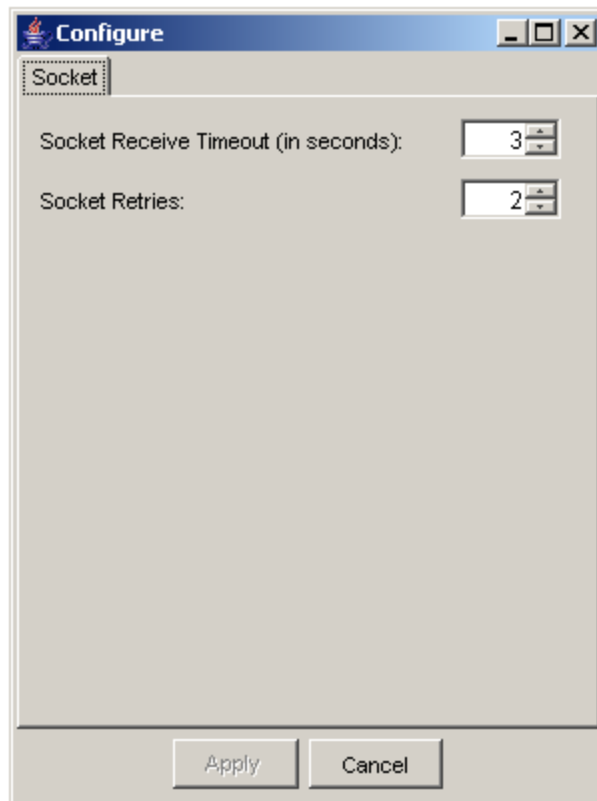
This window is to be used as an address diagnostic and only locates Ethernet interfaces. To use the window, an IP address, in the standard xxx.xxx.xxx.xxx form, should be entered into the provided text entry point. With a value entered, clicking the "Ping" button will begin the "ping" application. As the application executes, the output will be displayed in the provided window in the standard "ping" format.

Canceling

Clicking the "Cancel" button causes the ping window to close without starting the "ping" application.

Socket Configuration

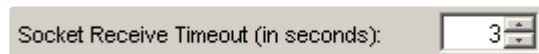
To open the socket configuration window, under the Main Application Window select “Options” -> “Configure”.



To configure the Ethernet socket two options are provided:

Socket Timeout

The amount of time the IP Discovery socket will wait for an IP Discovery packet to be received before giving up. The value is specified in seconds and can range from 1-60 seconds.



Socket Retries

The number of times the IP Discovery socket will request IP Discovery packets. The socket will wait the specified socket timeout period before performing a retry. The value is an integer value that can range from 1-10 retries.



Saving Socket Configurations

To save the configurations click the "Apply" Button located at the bottom of the configuration window. The apply button only becomes active if the above values have been modified. Clicking this button closes the configuration window.

Abandoning Changes

To abandon changes made to the socket configurations click the "Cancel" button located at the bottom of the configuration window. Clicking this button closes the configuration window.